



Product Brief

Core Clock/Memory

- OC Mode: 1435 MHz / 8032 MHz
- Default Mode: 1380 MHz / 8000 MHz
- Silent Mode: 1324 MHz / 7968 MHz
- 8 GB GDDR5

Features

- Double Ball Bearings Fan Design
- High Performance Composite Heatpipes
- Support 8K Resolution
- Graphic Outputs: 3 DisplayPort, HDMI, DVI

Phantom Gaming Tweak Utility

- Temperature and Fan Speed Monitoring
- Core / Memory Clock Tweak
- Core / Memory Voltage Tweak

**RADEON
RX 5 8 0**

**8GB
GDDR5**
**DirectX
12**
**X edition
Dual-Fan**
**HDMI™
HIGH DEFINITION MULTIMEDIA INTERFACE**

Armor Your VR Machine

High-performance hardware is required to experience and enjoy the impressive world of Virtual Reality, ASRock provides the perfect VR ready components for your system, brings the games alive with the best performance and extremely realistic VR experience.

DUAL FAN DESIGN

2X fans for extremely making system cooling optimized.



DOUBLE BALL BEARINGS FAN DESIGN

Reduce friction, allow fan to run smoother and with a lifespan up to 50,000-100,000 hours. Compared to traditional design with oil leakage problem, it improves lifespan by 30 ~ 40% and with an enhanced cooling efficiency significantly.



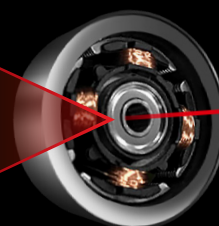
Traditional Design

V.S.



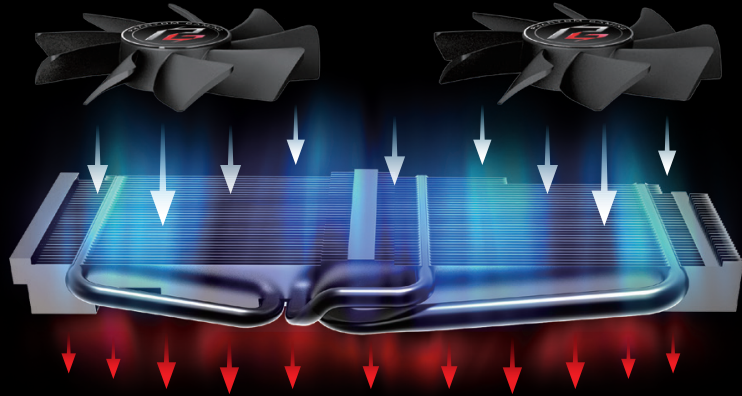
Double Ball Bearings

30-40%
LIFESPAN



ULTRA COOL XXL ALUMINUM ALLOY HEATSINK & HEATPIPE DESIGN

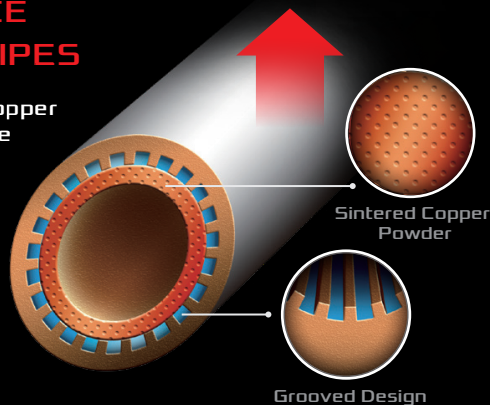
Equipped with huge heatsink and heatpipe designs to improve thermal transfer effectively.



Up to **30%**
Performance Boost

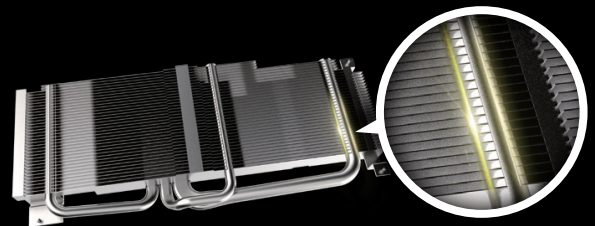
HIGH PERFORMANCE COMPOSITE HEATPIPES

Combined with grooved and copper powder sintered interfaces, the composite heatpipe design efficiently improve thermal transfer of heat between two solid interfaces and increase cooling capacity Up to 30% Performance Boost.



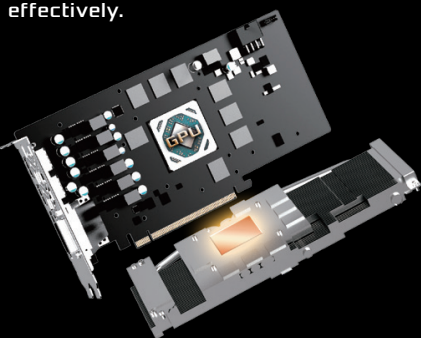
HIGH-DENSITY METAL WELDING

Effectively isolate all convergence of the gap between pipe and stacked fins, hence improve heat transfer effectively.



COPPER BASE HEATSINK DESIGN

With premium copper base heatsink design, the direct contact area to the GPU would be maximized to improve thermal transfer effectively.



PHANTOM GAMING TWEAK

Smart FAN speed control support and instant performance tweaking.



AMD RADEON Software ADRENALIN EDITION



Specification

Graphics Engine	AMD Radeon RX 580
Bus Standard	PCI Express x16 Gen3
DirectX	12
OpenGL	OpenGL® 4.5
Video Memory	GDDR5 8GB
Engine Clock	1380 MHz
Stream Processors	2304
Memory Clock	8000 MHz
Memory Bus	256-bit
Resolution	Digital Max Resolution: 8K (7680 x 4320)

Interface

HDCP Support
Multi-view
Power Connectors
Accessories

Dimensions

1 x Dual-link DVI-D
1 x HDMI 2.0
3 x Display Port 1.4
Yes
5
1 x 8-pin
1 x Support CD
1 x Quick Installation Guide
278.81 x 126.78 x 41.91 mm